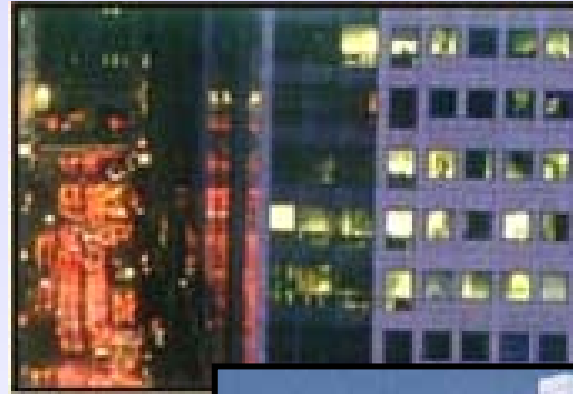




The Homebuyer's Guide To: Stamford, CT.

Table of Contents:

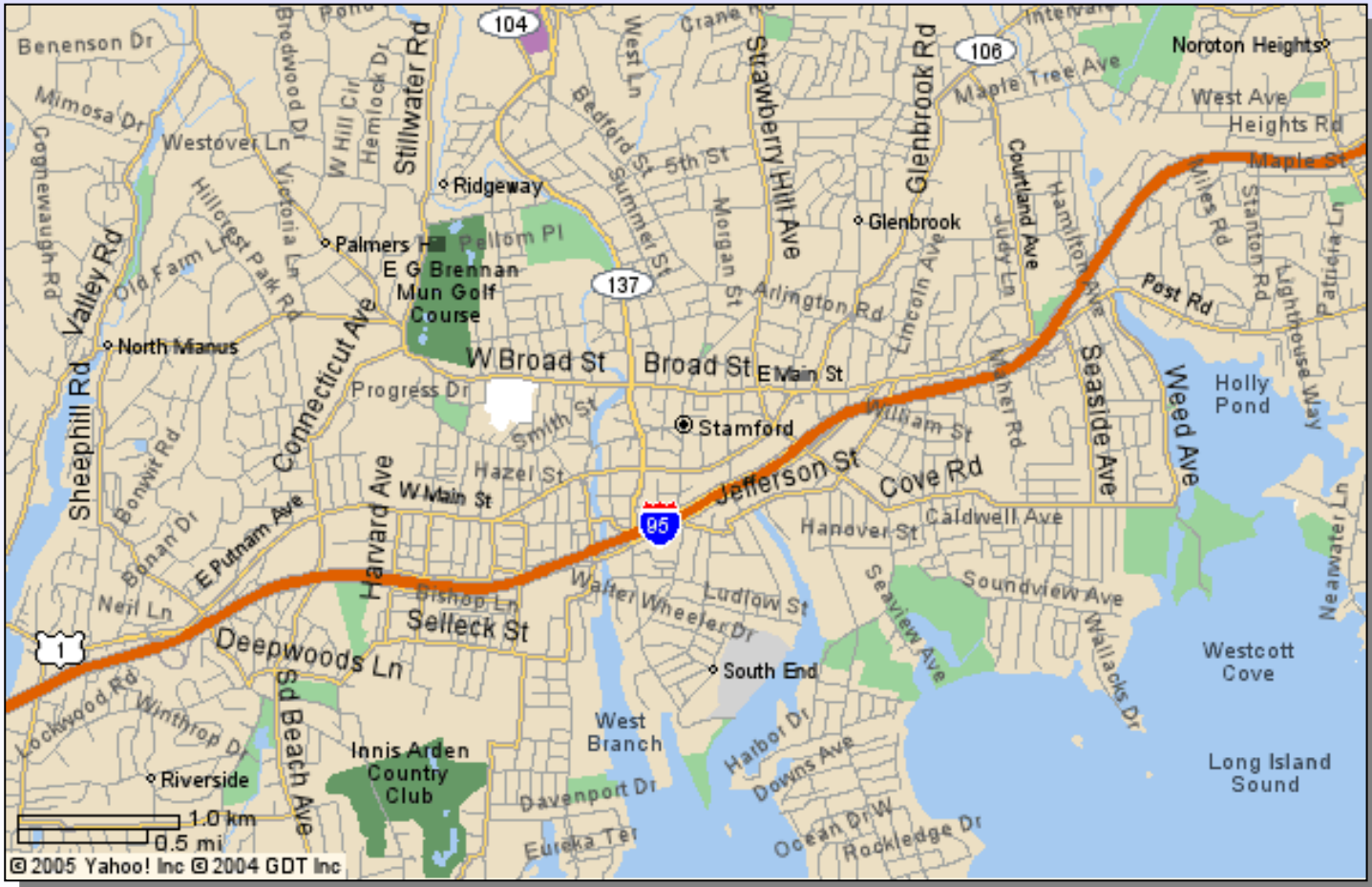
- [Map of Stamford](#)
- [About Stamford](#)
- [Useful Links](#)
- [Stamford Hotels](#)
- [Upcoming Events](#)
- [Stamford Public Schools](#)



Welcome to Stamford!

This information packet will help you get to know this great town.

Map of Stamford



[Return to Table of Contents](#)

About Stamford

Stamford in General:

Stamford (a coastal community located on Connecticut's western shoreline) has approximately 117,000 citizens, and consists of 37.3 square miles. It's 25 miles northeast of New York City, 40 miles southwest of New Haven and 90 miles south of Hartford, Connecticut's capitol.

The fourth largest city in Connecticut, Stamford is located in Fairfield County--bordering the towns of Greenwich, New Canaan, Darien, and Pound Ridge, New York.

Diverse Landscape

Stamford is a mixture of both urban and suburban--from the wooded North Stamford area, to its impressive corporate downtown center, to the lovely shoreline areas that represent its parks and beaches.



Economic Development

During the last quarter of the 20th century, numerous companies and corporations have migrated to Stamford, taking advantage of its soaring economic development. Well-known as a top-notch financial center, Stamford is the country's third largest corporate headquarters community (national, Stamford-based corporations include Time Warner, UBS Warburg and Clairol, Inc.)—and has been ranked as the eighth largest business center in the United States.

[*Return to Table of Contents*](#)

About Stamford (cont'd.)

Cultural/Social Profile

Stamford offers an impressive array of entertainment, dining, retail and nightlife for all ages and tastes. Entertainment/leisure choices are expanded even further with Stamford's close proximity to New York City. Metro North Railroad provides express train service to New York's Grand Central Station (from the Stamford Transportation Center) in approximately 40 minutes. Those who live and work in Stamford also have easy access to both I-95 (Connecticut's interstate highway) and Route 15 (the Merritt Parkway), which merges into New York's Hutchinson River Parkway.



Education

Stamford is one of the first cities in the country (and the first in Connecticut) to implement a School Readiness Program, which offers all four-year olds in our community the opportunity to receive a pre-kindergarten education. Stamford is also one of ten school districts nationwide to be named by the National Commission on Teaching and America's Future as a model of exemplary education reform--and 79% of all its high school graduates pursue higher education. Also home to the University of Connecticut's Stamford Campus, these qualities have helped Stamford's designation of as one of the most livable cities in America.

*For more information on the City of Stamford, please visit its website,
www.ci.stamford.ct.us.*

[Return to Table of Contents](#)

Useful Links

Tons of information about Stamford and the surrounding areas are online, right at your fingertips!

- Connecticut

- [Coastal Fairfield County Convention & Visitor Bureau](#)
- [Department of Motor Vehicles](#)
- [Office of Tourism](#)
- [State of Connecticut](#)
- [The Business Council of Southwestern Connecticut](#)
- [University of CT-Stamford Branch](#)

- Stamford

- [Chamber of Commerce](#)
- [City of Stamford](#)
- [Ferguson Library](#)
- [Keep Stamford Beautiful, Inc.](#)
- [Stamford Public Schools](#)
- [Stamford YMCA](#)

- Entertainment

- [Avon Theatre Film Center](#)
- [CT Grand Opera & Orchestra](#)
- [Movies - Crown Landmark](#)
- [Movies - Crown Majestic](#)
- [Stamford Center for the Arts](#)
- [Stamford Symphony Orchestra](#)
- [Stamford Theatre Works](#)
- [The Advocate](#)

- Transportation

- [Amtrak Train Schedule](#)
- [Commuter Connection Central](#)
- [CT Highway Traffic Cams](#)
- [CT Transit Bus Schedule](#)
- [Holiday Inn](#)
- [Metro North Train Schedule](#)
- [Shore Line East Express](#)

[Return to Table of Contents](#)

Stamford Hotels

[Hyatt Regency Greenwich](#)

1800 E Putnam Ave, Old Greenwich, CT 06870
203-637-1234

[Fairfield Inn by Marriott Stamford](#)

135 Harvard Ave, Stamford, CT 06902
203-357-7100

[Super 8 Motel](#)

32 Grenhart Rd, Stamford, CT 06902
203-324-8887

[The Westin Stamford](#)

One First Stamford Place, Stamford, CT 06902
203-967-2222

[Hampton Inn & Suites](#)

26 Mill River St, Stamford, CT 06902
203-353-9855

[Marriott Hotel](#)

Two Stamford Forum, Stamford, CT 06901
203-357-9555



[Courtyard by Marriott](#)

275 Summer St, Stamford, CT 06901
203-358-8822

[Holiday Inn Select Stamford](#)

700 Main St, Stamford, CT 06901
203-358-8400

[Rodeway Inn](#)

19 Clarks Hill Ave, Stamford, CT 06902
203-327-4300

[Stamford Suites](#)

720 Bedford St, Stamford, CT 06901
203-359-7300

[Sheraton Stamford Hotel](#)

2701 Summer Street, Stamford, CT 06905
203-359-1300

[*Return to Table of Contents*](#)

Upcoming Events in Stamford

French Market ([Columbus Park, Stamford](#))

New vendors offering fruits, vegetables, flowers, baked goods and more.

June through November, 2005

Tuesdays & Saturdays 9:00am-3:00pm

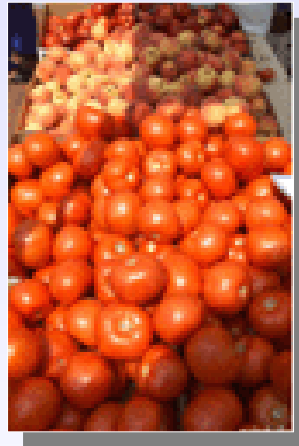
Heyman Properties presents

Art in Public Places 2005

"Color/Forms" (in partnership with [Stamford Town Center](#) & [The Advocate/Greenwich Time](#))

Sculpture Exhibit - June through August, 2005

Color/Forms, this year's outdoor sculpture exhibit, features works of by renowned national artists. A photography exhibit accompanies the exhibit in storefront windows throughout Stamford Downtown.



Alive @ Five Concert Series

Presented by [Stamford Town Center](#) and [The Advocate/Greenwich Time](#) in Partnership with Stamford Center for the Arts, Budweiser and BevMax on the Holiday Inn Select Stage

Thursday Evenings, June 23-July 28, 2005,
5:00pm to 8:00pm

Free summer concert series with live music from national and regional headliners on Thursday nights in Columbus Park.

Pops in the Park

Wednesday Evenings, July 13, 20, 27, 2005

An evening with the Stamford Symphony Pops, a production of Shakespeare's "Much Ado About Nothing," and a cabaret performance by a NY Cabaret Singer in Columbus Park.

For more upcoming events, please visit [Stamford-Downtown.com's Events page](#).

[Return to Table of Contents](#)

Stamford Public Schools

Useful links and resources for a great school system:

- [Stamford Public Schools website](#)
- [School Registration Information](#)
- [William Pitt Child Development Center](#)
- [School Closing & Delay Information](#)
- [Before & After School Programs](#)
- [Parent Resources](#)



[*Return to Table of Contents*](#)